

## FITTINGS SPIREX-BOX 40 MM



IP65 Fittings for Spirex 2311 and box connection. They are compliant with the European standards EN 61386.1 and EN 61386.23 and they are grey (RAL 7035). These articles are available also in black colour: the code changes, by replacing the final letter G with "N".

---

<b>Art. code:</b>	RAG40G 1,1/2" - RAI50G 50x1,5
<b>Colour</b>	Grey - RAL 7035
<b>Gas lead</b>	RAG40G 1,1/2"
<b>Metric lead (IMQ)</b>	RAI50G 50X1,5
<b>Diametro Spirex</b>	40 mm
<b>Pack</b>	10 pcs
<b>Compliant with Low Voltage Directive</b>	LVD 2014/35/EU
<b>Spirex</b>	Fittings Spirex-box

## Technical information

---

### Technical specification

Material	PVC
Resistance to the penetration of solid objects	Dust-tight (6)
Resistance to water penetration	Protected against water jets (5)
IP protection rating	IP65
Fire resistance: non-flame propagating	<b>I</b>
Standard	EN 61386.1, EN 61386.23, EN 60423
Glow Wire Test (IEC EN 60695-2)	850°C

Certifications

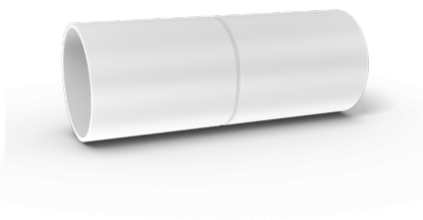


## Related products



Cable drawer MON3 25 m

Art. code: MON325



HF Coupling 20 mm

Art. code: MFL20



Coupling with clip 25 mm

Art. code: SML25



Cable puller STCX 20 m

Art. code: STCX20



Cable drawer MON 5 m

Art. code: MON5



GoEasy

Art. code: PMEASY